

# Isolation Transformers



2024/402424

## DESCRIPTION

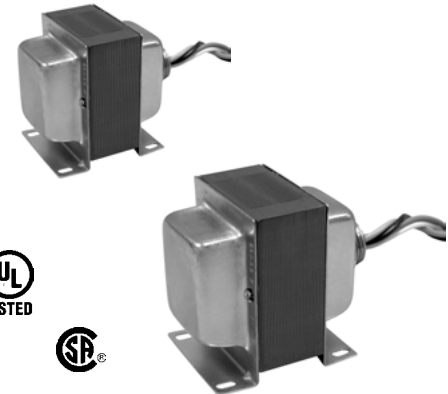
The 20 VA and 40 VA isolation transformers provide isolation to 24 VAC circuits.

## APPLICATION

The transformers are typically used for needed 24 VAC isolation between fullwave and halfwave bridge devices, and eliminates power supply incompatibilities, i.e., ground loops.

## FEATURES

- Hub and/or foot mounting
- Split bobbin, high isolation, reduces line noise
- UL 1585, Class 2, or UL 506
- UL Listed
- Compact size



## SPECIFICATIONS

Part Number	Rating	Voltage		Connections			Type	Listings
		Primary	Secondary	Hub	Primary	Secondary		
<a href="#">2024MWSH</a>	20 VA	24	: 24 VAC	SH	w/Pri. + Sec. Leads	1	E, S	ULL, CSA
<a href="#">402424MW</a>	40 VA	24	: 24 VAC	SH	w/Pri. + Sec. Leads	1	E, S	ULL, CSA
TRANS-PLATE	Zinc plated steel mounting plate, 4"x4", w/knockout for hub mounting							
Notes:	SH = Single hub, threaded E = End bells, metal encased S = Split bobbin construction Leads = 8" Lead wire, color coded			Listings: 20 VA = UL 506, General purpose 40 VA = UL 1585, Class 2 ULL = UL Listed CSA = CSA Certified				