

CCE-1000 Series Pneumatic-Electric Switches

Description

The CCE-1000 Series pneumatic-electric relays are designed for use in HVAC system control circuits. The CCE-1000 series is ideal for applications such as starting fan coil unit fans, exhaust fans, and direct control of electric duct heaters.

Models 1001 and 1003 are single-pole, double-throw units. Models 1002 and 1004 are double-pole, double-throw units.

Models CCE-1001 and 1002 have a case and cover to conceal the switching mechanism. Wiring is accessed through two 1/2" conduit openings.

Models 1003 and 1004 are intended for use in enclosures, such as electric duct heater control panels, and do not have cases or covers.

Features

- ◆ Choice of single-pole, double-throw or double-pole, double-throw units.
- ◆ Models are not position sensitive and may be mounted on surfaces or in enclosures.
- ◆ CCE-1001, 1002 are UL and CSA listed.
CCE-1003, 1004 are UL recognized, CSA listed

Application

The CCE-1000 series are ideal for starting fan coil unit fans, exhaust fans, and direct control of electric duct heaters.

!CAUTION

Pneumatic devices **MUST** operate with CLEAN, DRY, control air. Any other medium will result in the device's eventual failure.



Models

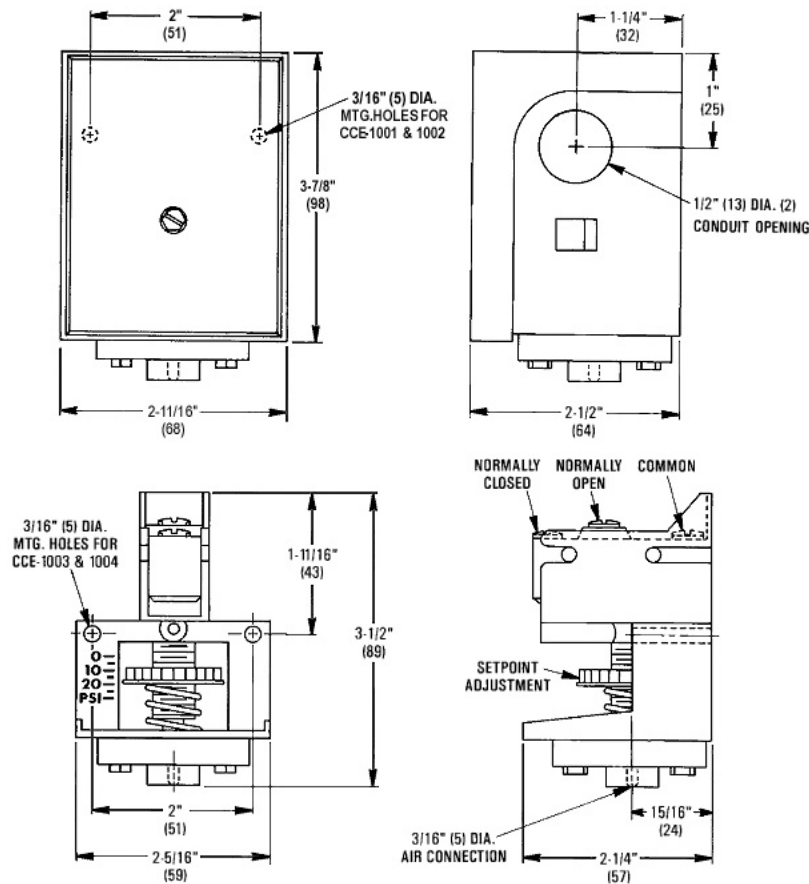
CCE-1001	SPDT, with case and cover
CCE-1002	DPDT, with case and cover
CCE-1003	SPDT, without case and cover
CCE-1004	DPDT, without case and cover

Accessories

HPO-0009	Replacement Diaphragm
----------	-----------------------

Details

All dimensions in inches (mm).



Specifications

Setpoint Range 2 to 25 psig (14 to 172 kPa)

Differential 2 psi fixed (14 kPa)

Pressure Max. 30 psig (207 kPa)

Switching Action

CCE-1001	SPDT
CCE-1002	DPDT
CCE-1003	SPDT
CCE-1004	DPDT

Connections

Air	3/16" (5 mm) nipples for 1/4" (6 mm) O.D. polyethylene tubing
Electrical	8-32 UNC binding head combination terminal screw and cup washer.

Electrical Ratings 20 amps non-inductive @ 120-240-480 VAC
1 HP @ 120 VAC; 2 HP @ 240 VAC

Weight

CCE-1001	10 oz. (283 grams)
CCE-1002	12 oz. (340 grams)
CCE-1003	4 oz. (113 grams)
CCE-1004	6 oz. (170 grams)

Material

Black polycarbonate

Approvals

CCE-1001, 1002: UL Listed, CSA

CCE-1003, 1004; UL recognized, CSA

Temperature Limits

Operating	40° to 120° F (4° to 49° C)
Shipping	-40° to 140° F (-40° to 60° C)

INTEC
Wilson Mohr

9730 Distribution Ave.
San Diego, CA 92121

Ph: 858-578-7887
Fx: 858-578-4633

Email: info@inteccontrols.com
www.inteccontrols.com