



DBTA-345

certified
ISO 9001 **CE**

Room controllers with proportional output for 4-pipe systems

FUNCTION

4-pipe fan coil control for room temperature applications with:

- 2 proportional 0...10 V output with dead zone (ZN);
- manual selection of On/Off and 3 motor speeds (depending on models);
- internal or remote temperature sensor (optional).

Type	On/Off	3 speeds	Local S/W
DBTA-345-139	•	•	ZN
DBTA-345-199	•		ZN
DBTA-345-939		•	ZN
DBTA-345-999			ZN

On request:
°F scale

On request:

Optional remote 1 m cable sensor, selectable by jumper; ordering code: NTB010-623.

TECHNICAL FEATURES

Power supply: 24 Vac +/- 10%, 50/60 Hz

Max load: 6 A (speeds)

Output: 2 proportional output 0...10 Vcc
($R_L > 10 \text{ k}\Omega$)

Power cons.: 1 W

Sensor: thermoresistor NTC 100K

Set point: +5...+30 °C; mechanical limitation of the set point adjustment

Prop. band: 1...5 °C

Dead zone: 1...4 °C

Working: temperature 0...+40 °C
relative humidity 10...90% r.h. (non condensing)

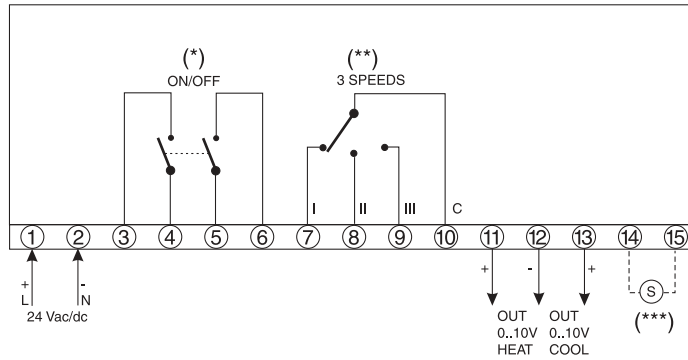
Storage: -20...+70 °C

Housing: self-extinguishing plastic
white (RAL 9010)

Protection: IP30

Size: 144 x 82 x 27 mm

Net weight: 170 g



Terminal connections for 4-pipe air conditioning and heating systems.

The On/Off and 3 speed switches are electrically independent from thermostat and are directly connected terminals.

(*) Only for models DBTA-345-139, DBTA-345-199

(**) Only for models DBTA-345-139, DBTA-345-939

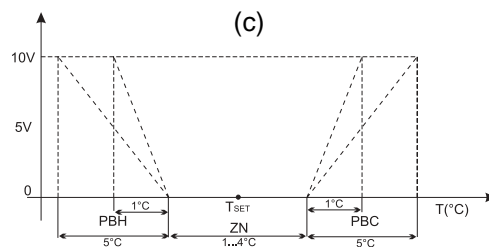
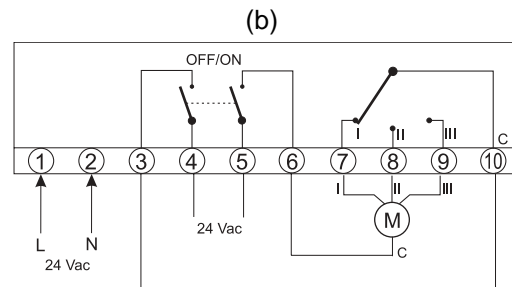
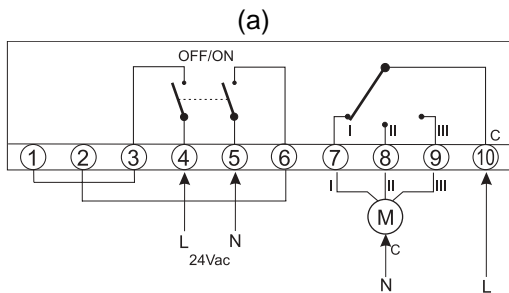
(***) Remote sensor (optional)

Application examples of the terminal connection:

the On/Off switch commands the start-up of the thermostat and the motor is always powered (a);

the On/off switch commands the start-up of the motor (b).

Logic of proportional output (c).



Jumper setting:

• J1 closed = internal sensor

• J2 closed = remote sensor

The products are factory supplied with internal sensor jumper setting.

