

FEATURES

- ❖ Buffered Manual Output Signal
- ❖ 2 3/16" Snap Track Mounting
- ❖ Standoff Mounting
- ❖ 4 Independent Channels

APPLICATIONS

- ❖ Damper Signal Override
- ❖ Hand-Off-Auto Switching of Control Signals

DESCRIPTION

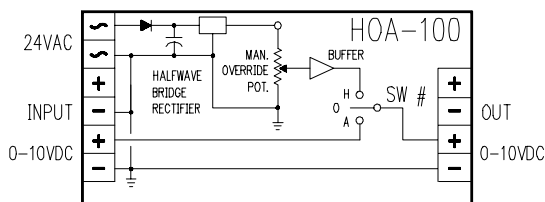
The HOA-100 is a 4 channel hand off auto board designed to pass a voltage signal in auto mode or provide an op-amp buffered adjustable voltage signal in hand mode.

OPERATION

The HOA-100 uses an industry standard half wave bridge power supply (terminal #2 of AC supply and the input/output signal commons (-) are connected). Each channel has it's own H-O-A toggle switch and potentiometer for independent control.

CAUTION: Care should be taken to avoid connecting both 24V AC and input to a controller device that utilizes a full-wave bridge rectifier (or floating common). Mixing half-wave and full-wave bridge rectifier devices on the same 24V AC supply will damage the full-wave bridge rectifier devices when commons are connected. (See Application diagrams back page).

WIRING CONFIGURATION



SPECIFICATIONS

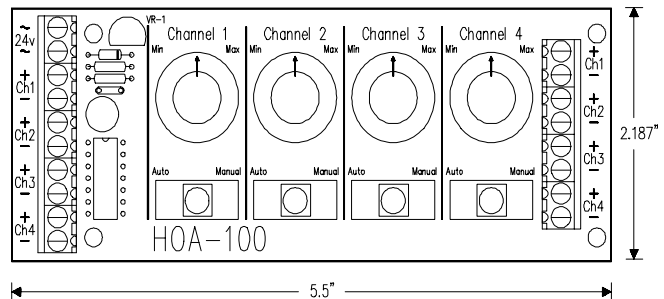
SIZE:	5.5"L x 2.187"W x 1.5" H
MOUNTING:	2.187" snap track or 1.75" x 4.625" standoff mounting
POWER:	24V AC ± 15%, 50/60Hz .5VA 24V DC @ 20mA
INPUT SIGNALS:	0-10V DC, or 0-15V DC
OUTPUT SIGNALS:	0-10V DC @ 5KΩ load minimum 0-15V DC @ 10KΩ load minimum
AMBIENT TEMP:	0-50°C

ORDERING INFORMATION

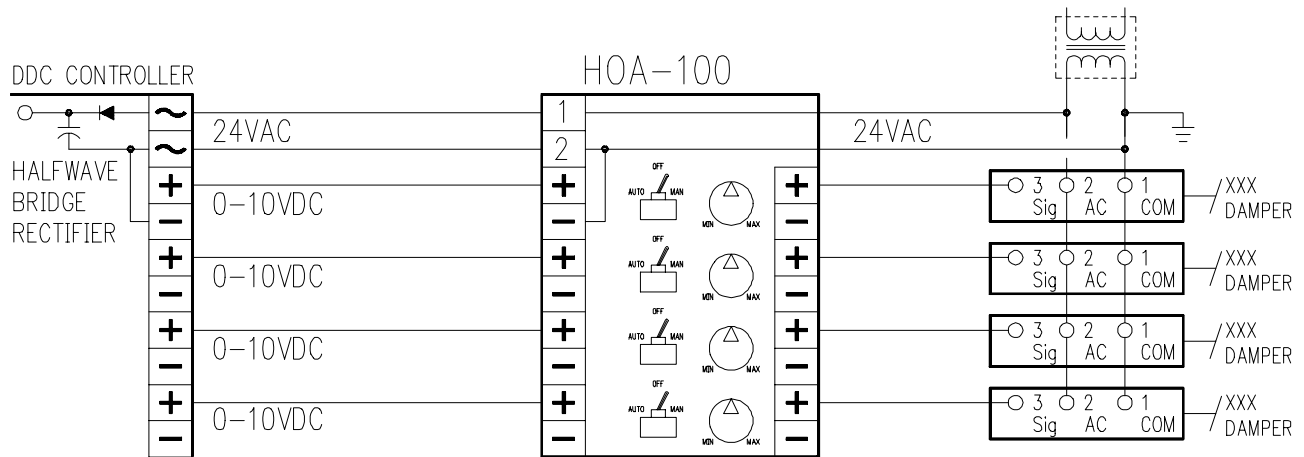
HOA-100/XX

- └ Manual Voltage Range Code
- 10 - 0-10VDC Voltage range
 - 15 - 0-15VDC Voltage range

PHYSICAL CONFIGURATION

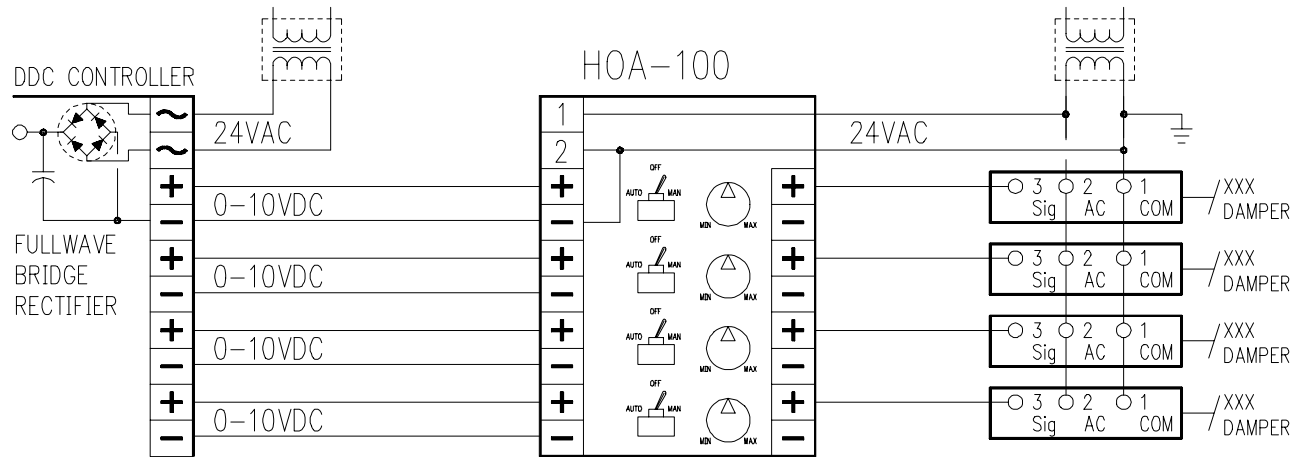


APPLICATION #1 - DAMPER OVERRIDE WITH HALFWAVE BRIDGE CONFIGURED CONTROLLER



The HOA-100 was designed to provide hand-off-auto capability to DDC type controllers in controlling damper position. The HOA-100 can be used for HAND-OFF-AUTO operations in other applications. Terminal 2 of the HOA-100 is common to both input and output common (-) terminals. The same transformer can be used but polarity must be observed.

APPLICATION #2 - DAMPER OVERRIDE WITH FULLWAVE BRIDGE CONFIGURED CONTROLLER



Terminal 2 of the HOA-100 is common to both input and output common (-) terminals. If being used with a controller that utilizes a full wave bridge rectifier in its power supply section (output common is floating or not connected to one side of AC input) an isolation transformer must be used to prevent damage to power supply section.

Call for other calibration ranges and versions.