

Product Data

**I-LLS
I-LLS-T**

Light Level Sensors
and Transmitter

Product Description

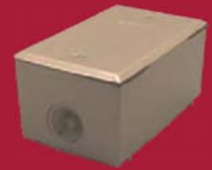
The light level sensor and transmitter is to be used for applications such as turning on or off indoor or outdoor lighting based upon the amount of available light. These sensors are not to be used in applications such as green houses where the actual amount of light is monitored. This unit is mounted in either the end of a waterproof conduit box or as a snap track mount.

The I-LLS has a resistance in darkness in excess of 1M ohm and a resistance in bright light of less than 1.5K ohm. The I-LLS-T incorporates a transmitter with the sensor to produce a non-linear 4-20 mA output signal. The I-LLS-T is calibrated for 4 mA in darkness and 20 mA in bright Light.

Product Specifications

Supply Voltage	+24 to 35 VDC
Input Impedance	150K Ohms
2 Foot Candle Resistance	17K Ohms
Output	LLS - See Resistance Graph LLS-T - 4 to 20 mA (non-Linear)
Operating Temp. Range	-40 to 70°C (-40 to 158°F)
Maximum Current Draw	22mA
Operating RH Range	0-95% RH, non-condensing

Light Level



Attributes:

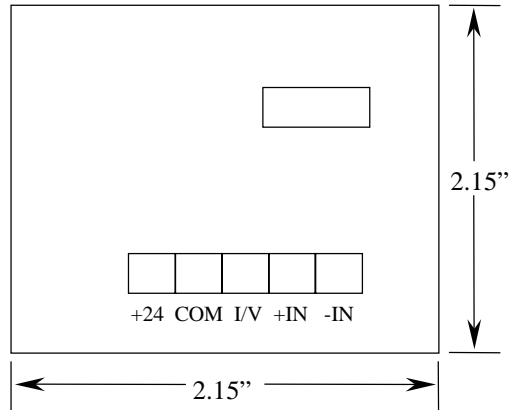
- **Indoor and Outdoor ranges available**
- **NEMA 3R weatherproof enclosure for all transmitters**

Applications:

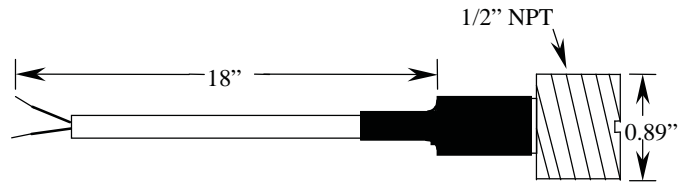
- **Illuminated Outdoor Signs**
- **Outdoor Lighting**
- **Security Lighting**

Dimensions

I-LLS-T

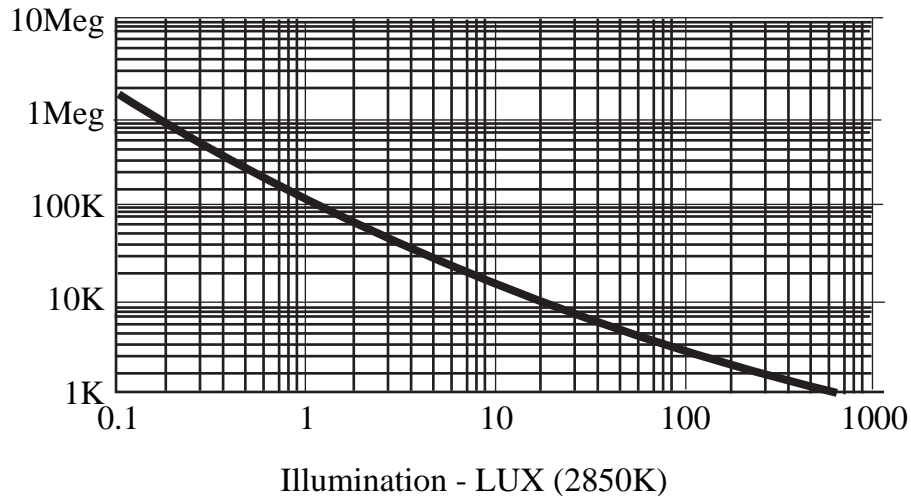


I-LLS



Typical Resistance vs. Illumination Characteristics

Resistance (Ohms)



Ordering Information

Model#
I- []

↑
LLS

LLS-T (0 to 100 Foot Candles) Indoor Lighting

LLS-T (0 to 500 Foot Candles) Outdoor Lighting

Enclosure
-[]

↑
() - No Enclosure (standard)

(BB) - Bell Box (NEMA 3R)

This option is for sensors only the Transmitter comes standard with the Bell Box option

Example: I-LLS or I-LLS-T (0 to 100 Foot Candles) or I-LLS-BB