

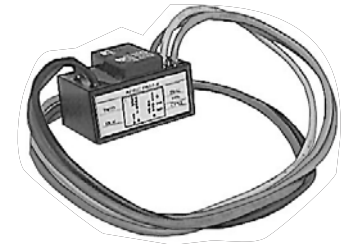
Multi-Voltage Relay "Encapsulated"



PAM-1

DESCRIPTION

Multi-voltage encapsulated control relay provides 10 amps form C contacts. The input voltage of 24 VDC, 24 VAC or 115 VAC can be selected for energizing the relay coil. A status LED illuminates when the relay coil is energized. The encapsulated relay mounts by using the double-sided adhesive tape, self-tapping screw or loosely placed in a back box.



APPLICATION

The relays are suitable for remote field installation and applicable for control or status feedback in conjunction with HVAC temperature control, energy management, lighting, fire alarm and security systems.

FEATURES

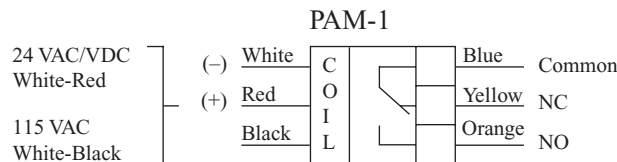
- Easy field installation
- Color-coded wire leads
- LED status indicator
- Multi-voltage
- SPDT, 10 A @ 115 VAC
- UL Listed

SPECIFICATIONS

Power requirement	15 mA
Coil voltage	24 VDC, 24 VAC, or 115 VAC
Contact	(1) SPDT, Form C
Contact rating	10 A @ 115 VAC 7 A @ 28 VDC 250 micro amps @ 5 VDC
Operating status LED display	Illuminates when coil energized
Permissible ambient humidity	5 to 95% RH, non-condensing
Permissible ambient temperature	-58°F to 185°F (-50°C to 85°C)
Unit	- Material: ABS
	- Color: Black
	- Dimensions: 1.0 x 1.5 x 0.9 in. (26 x 38 x 22 mm)
	- Installation: Surface mount with supplied double-sided adhesive tape, or with mounting screw and (6) wire nuts
	- Wire connections: Color coded, 12 in. (305 mm) wire leads, 18 AWG (0.75 mm ²)
Ship weight	0.1 lb. (0.05 kg)
Listing/approvals	UL Listed, CSA approved CSFM 7300-1004:10 MEA 73-92-E Vol 21

Part Number PAM-1

WIRING DIAGRAM



Relay contact position shown in the non-energized condition.