

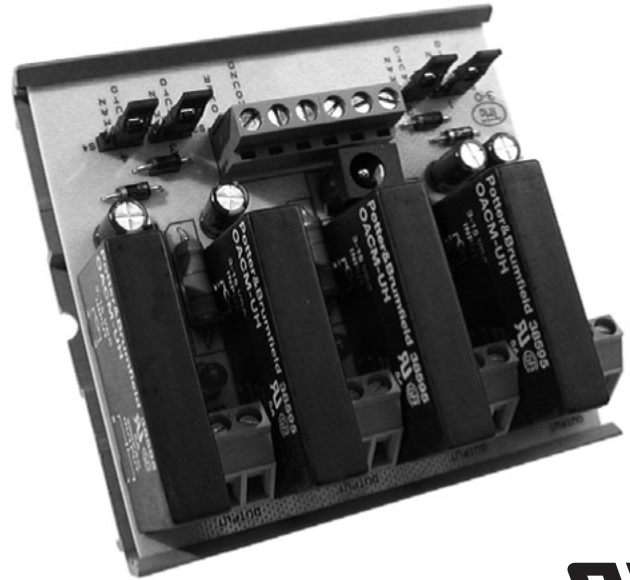
### Description and Applications

These solid state relays provide zero-crossing triac switching for use in energy management systems and where transients may pose a problem.

The REE-2103 has four separate outputs, while the REE-2104 has one. Each output has an associated red LED (light emitting diode) for indicating the output is switched on. An AUTO-MANUAL-OFF jumper is provided to override the output.

### Features

- ◆ Precise zero crossing for fast switching
- ◆ Optically isolated with 4000 V<sub>RMS</sub> isolation
- ◆ High immunity to false operation
- ◆ No mechanical contacts for reduced costs and downtime

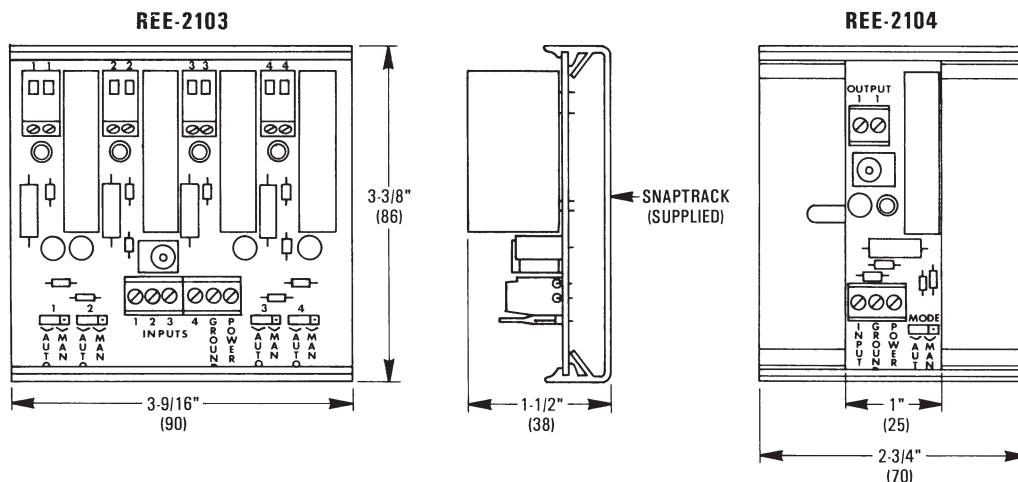


### Models

- |          |  |
|----------|--|
| REE-2103 | <b>Four</b> triac outputs with zero-crossing switching |
| REE-2104 | <b>One</b> triac output with zero-crossing switching   |

## Dimensions

All dimensions are in inches (mm)



## Specifications

**Output Rating** (47 to 63 Hz @ 25° C)

Parameter	Min.	Max.
Load Voltage	24 VAC	280 VAC
Load Current	0.05 A	5 A
Horsepower Rating (@ 240 VAC)		1/2 hp

### Control Input Power

24 VAC, 1.6 VA max.  
6 to 40 VDC, 4 to 56 mA

### Auxiliary Power\*

REE-2103 24 VAC, 6.4 VA max or  
6 to 40 VDC, 16 to 224 mA

REE-2104 24 VAC, 1.6 VA max or  
6 to 40 VDC, 4 to 56 mA

\* Auxiliary Power is only required to enable manual-override functions

### Connections

Input/Output Screw terminals for 18 to 22 AWG copper

Auxiliary Power Screw Terminals for 18 to 22 AWG copper or 2.5 mm female connector

### Mounting

Provided with 3.25" (83 mm) snap-track; not position sensitive (2.75" wide for 2103, 1.875" wide for 2104)

### Approvals

UL recognized

### Material

ABS, UL Flame Class 94HB

### Weight

REE-2103 2.6 oz. (74 grams)

REE-2104 1.2 oz. (34 grams)

### Temperature Limits

Operating 0° to 120° F (-18° to 49° C)

Shipping -40° to 140° F (-40° to 60° C)

**INTEC**  
Wilson Mohr

9730 Distribution Ave.  
San Diego, CA 92121

Ph: 858-578-7887  
Fx: 858-578-4633

Email: [info@inteccontrols.com](mailto:info@inteccontrols.com)  
[www.inteccontrols.com](http://www.inteccontrols.com)