

Globe Valve Bodies, Flanged, Two-Way



SSGA

DESCRIPTION

1/2" to 4" flanged, single seated, 2-way, 232 PSIG body rated, hot and chilled water and high pressure steam globe valves.

APPLICATION

Valves for 2-way configuration in commercial and industrial heating, ventilation and air conditioning systems.

FEATURES

- 232 PSIG body rated
- Hot & chilled water
- High pressure steam, 131 PSI
- Equal percentage flow characteristic
- High turndown ratio
- Maintenance free
- Two-year warranty



certified
ISO 9001



SPECIFICATIONS

Physical

Body rating 232 PSIG (1600 kPa)

Media

- water temperature 14°F to 392°F (-10°C to 200°C)
- glycol added Max. 50% of water contents

Note: Keep stem and packaging free from icing
- steam temperature 356°F (180°C)
- steam gage pressure Max. 131 PSIG (903 kPa)

Pipe Connection Flanged, UNI

Material/Characteristics

Valve body Cast iron, G25
- packing Teflon V-ring
- stem CrNi stainless steel, AISI 309
- plug Stainless steel, AISI 316
- seat Stainless steel, AISI 316

Stem stroke

- 1/2" to 1" valves 0.65 in. (16.5 mm)
- 1 1/4" to 2 1/2" valves 0.98 in. (25 mm)
- 3" to 4" valves 1.77 in. (45 mm)

Leakage

0... 0.02% of Cv

Stroke Cv

Equal percentage

Turndown ratio

Greater than 50:1

Max. flow

1180 ft/min (6 m/sec)

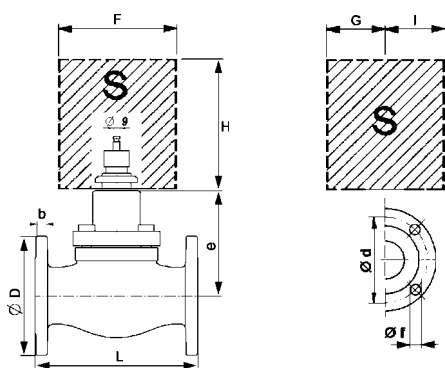
Valve Actuator

Compatibilities

MVL, MVL..A/C and others

Size	Flow Coefficient		Maximum Differential Pressure w/Actuators		Maximum Close Off Pressure w/Actuators		Part Numbers
	Cv	(Kv)	MVL.. PSIG (kPa)	MVL.. A/C PSIG (kPa)	MVL.. PSIG (kPa)	MVL.. A/C PSIG (kPa)	
Inch (mm)							2-Way
1/2 (15)	1.87	(1.6)	87 (600)	87 (600)	232 (1600)	232 (1600)	SSGA15R
1/2 (15)	4.67	(4.0)	87 (600)	87 (600)	232 (1600)	232 (1600)	SSGA15
3/4 (20)	7.35	(6.3)	87 (600)	87 (600)	232 (1600)	203 (1400)	SSGA20
1 (25)	11.67	(10.0)	87 (600)	87 (600)	232 (1600)	131 (900)	SSGA25
1 1/4 (32)	18.67	(16.0)	87 (600)	87 (600)	232 (1600)	131 (900)	SSGA32
1 1/2 (40)	28.00	(24.0)	87 (600)	80 (550)	196 (1350)	80 (550)	SSGA40
2 (50)	37.33	(32.0)	87 (600)	51 (350)	131 (900)	51 (350)	SSGA50
2 1/2 (65)	73.50	(63.0)	51 (350)	20 (140)	51 (350)	20 (140)	SSGA65
3 (80)	128.33	(110.0)	33 (230)	13 (90)	33 (230)	13 (90)	SSGA80
4 (100)	163.33	(140.0)	20 (140)	7.3 (50)	20 (140)	7.3 (50)	SSGA100

Outside Valve Body Dimensions, Inch (mm)								Weight
Size	Ø D	b	Ø d	Ø f	Holes	L	e	2-Way lbs. (kg)
1/2 (15)	3.74 (95)	0.63 (16)	2.56 (65)	0.55 (14)	4	5.12 (130)	2.99 (76)	7.7 (3.5)
3/4 (20)	4.13 (105)	0.63 (16)	2.95 (75)	0.55 (14)		5.91 (150)	3.11 (79)	9.9 (4.5)
1 (25)	4.53 (115)	0.63 (16)	3.35 (85)	0.55 (14)		6.30 (160)	3.19 (81)	12.1 (5.5)
1 1/4 (32)	5.51 (140)	0.71 (18)	3.94 (100)	0.71 (18)	4	7.09 (180)	5.08 (129)	19.2 (8.7)
1 1/2 (40)	5.91 (150)	0.71 (18)	4.33 (110)	0.71 (18)		7.87 (200)	5.39 (137)	22.7 (10.3)
2 (50)	6.50 (165)	0.79 (20)	4.92 (125)	0.71 (18)		9.06 (230)	5.71 (145)	30.2 (13.7)
2 1/2 (65)	7.28 (185)	0.79 (20)	5.71 (145)	0.71 (18)		10.63 (270)	6.30 (160)	43.2 (19.6)
3 (80)	7.87 (200)	0.87 (22)	6.30 (160)	0.71 (18)	8	12.20 (310)	6.93 (176)	69.9 (31.7)
4 (100)	8.66 (220)	0.94 (24)	7.09 (180)	0.71 (18)		13.78 (350)	7.48 (190)	95.9 (43.5)

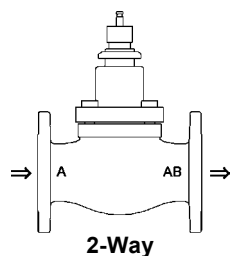


S = Space requirement for actuator mounting, Inch (mm)				
Actuator	H	F	G	I
MVL..	14.61 (371)	8.66 (220)	1.18 (30)	5.83 (148)
MVL.. A/C	14.61 (371)	8.66 (220)	2.28 (58)	5.83 (148)

OPTIONS & ACCESSORIES

- **245** Stem heater for SSGA series, 1/2" to 4" For media temperature below 14°F (-10°C) to avoid freeze-up of actuator/valve stem, 24 VAC, 75 VA
- **CF-DN15/NP16** 1/2" (15 mm)
- **CF-DN20/NP16** 3/4" (20 mm)
- **CF-DN25/NP16** 1" (25 mm)
- **CF-DN32/NP16** 1 1/4" (32 mm)
- **CF-DN40/NP16** 1 1/2" (40 mm)
- **CF-DN50/NP16** 2" (50 mm)
- **CF-DN65/NP16** 2 1/2" (65 mm)
- **CF-DN80/NP16** 3" (80 mm)
- **CF-DN100/NP16** 4" (100 mm)
- Companion flange UNI flange 232 PSIG (1600 kPa), w/bolts, nuts and gasket

VALVE PIPING & OPERATION

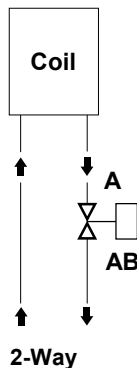


Valve markings on body: **A** and **AB**

Valve stem down, direct way **A** to **AB** is closed.

MVL.. A/C spring return actuator action at power failure:

- MVL..C, direct way **A** to **AB** will be closed.
- MVL..A, direct way **A** to **AB** will be open.



To avoid valve clogging, all dirt, metal shavings, slag, sand, etc. located inside of piping must be removed / flushed out prior to installing the valve.

Avoid installing the valve in a location where it will be subjected to vibration.

The valve can be installed in any position except in the valve stem downwards position.

Mount valve horizontally if media temperature is above 248°F (120°C).

