

MVA../V.Z ZONE VALVE INSTALLATION

MVA../V.Z-Install

Valve body installation

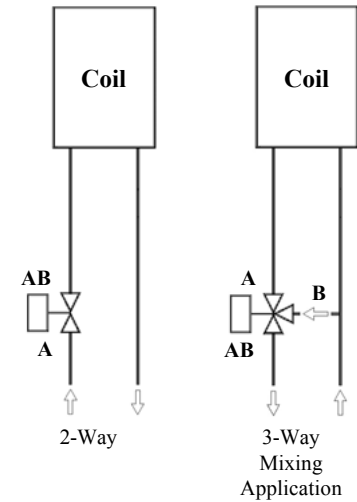
To avoid valve clogging, all dirt, metal shavings, slag, sand, etc. located inside of piping must be removed / flushed out prior to installing the valve.

Avoid installing the valve in a location where it will be subjected to vibration. The valve body should be piped up without the actuator.

The valve can be installed in any position except the valve stem downwards position.

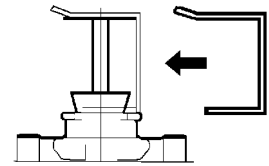
3-way valves should preferably be piped as mixing configuration (flow input A and input B to output AB). It can be piped as diverting configuration (flow input AB to two outputs A and B).

When the actuator is not coupled to the valve body, the valve will spring return to closed position (N.C. version), or open position (N.O. version), flow from A to AB.



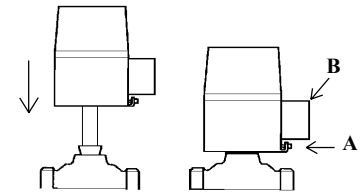
Manual override of valve

With the supplied push-on manual override bracket the valve can be manually opened or closed by clipping the bracket over the stem and below the tapered valve neck.



Actuator assembly

Prior to mounting the actuator on the valve, remove the plastic protective cover fitted over the valve stem. Loosen up screw (A) and fit the actuator over the stem and push it down so the sliding plate can be positioned into the tapered valve neck. Tighten screw (A) gently. To access the terminal wiring connection block, remove the screw from cover (B).

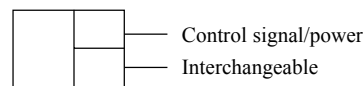


Wiring connection

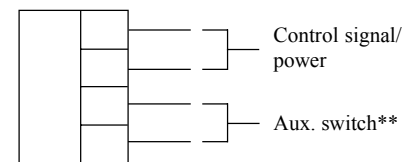
When power is applied to the actuator, the valve stem will move downwards (N.C. valve will open, N.O. valve will close). Be patient, cold start will take up to 220 sec to stroke 100%.

When power is taken off the actuator, the valve stem will move upwards (N.C. valve will close, N.O. valve will open).

MVA 43/23



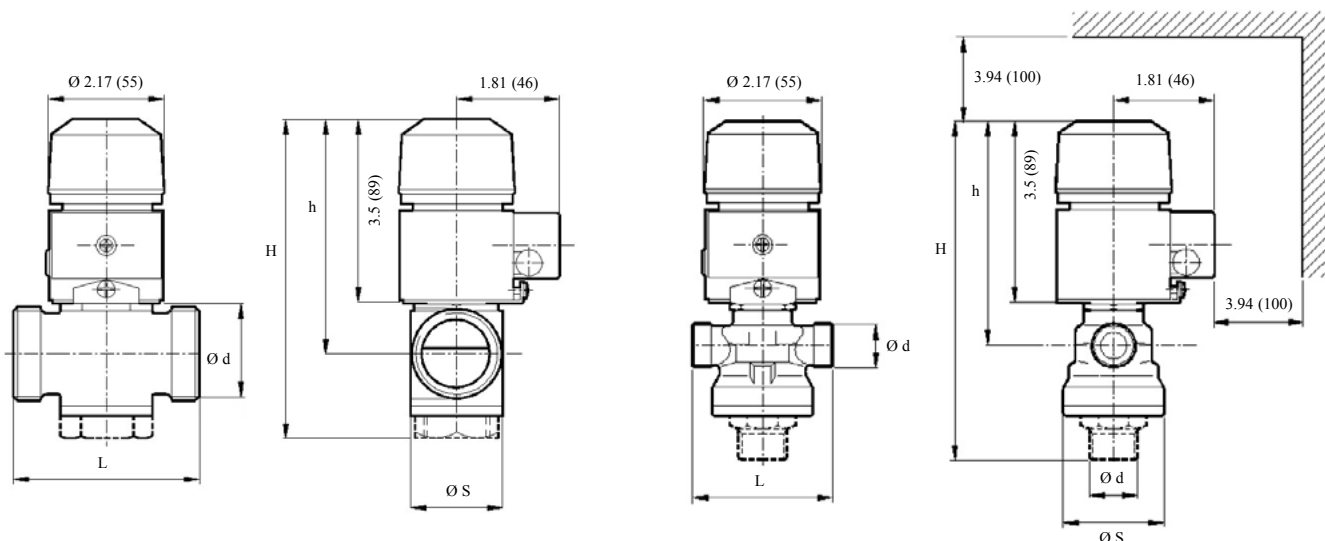
MVA 43/23+D41



** SPST contact closes when valve starts to open

Caution: Do not supply power to the actuator without being coupled to the valve body.

DIMENSIONS, in. (mm)



DIMENSIONS

Part Numbers	Ø d M-NPT	L In (mm)	ØS In (mm)	H In (mm)	h In (mm)
2-Way, N.C. MVA../VSZ09, 10, 11, 12, 13, 1B MVA../VSZ2B	1/2" 3/4"	2.6 (66) 3.1 (77)	1.7 (42) 1.8 (46)	6.0 (151) 6.2 (158)	4.4 (112) 4.5 (115)
2-Way, N.O. MVA../VSZ11, 12, 13, 1BA MVA../VSZ2BA	1/2" 3/4"	2.6 (66) 3.1 (77)	1.7 (42) 1.8 (46)	6.0 (151) 6.2 (158)	4.4 (112) 4.5 (115)
3-Way MVA../VMZ09, 10, 11, 12, 13, 1B MVA../VMZ2B	1/2" 3/4"	2.6 (66) 3.1 (77)	1.7 (42) 1.8 (46)	6.7 (169) 6.9 (174)	4.4 (112) 4.5 (115)